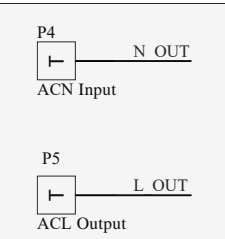
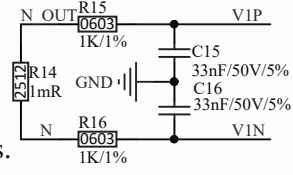
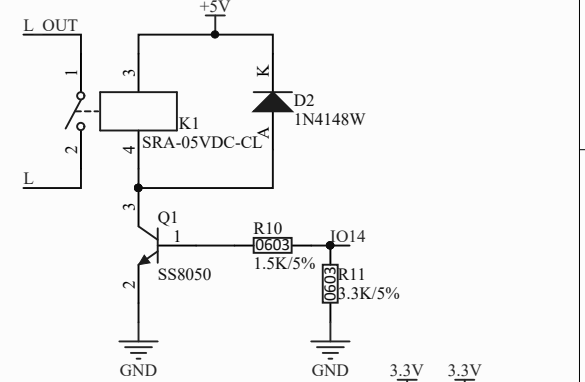
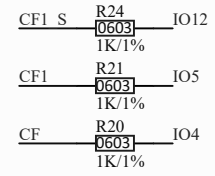
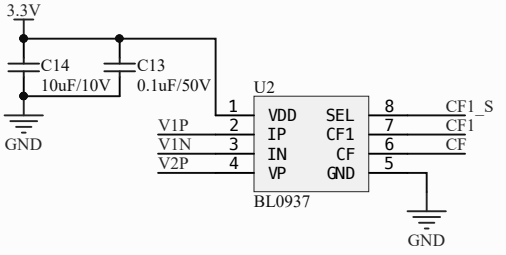


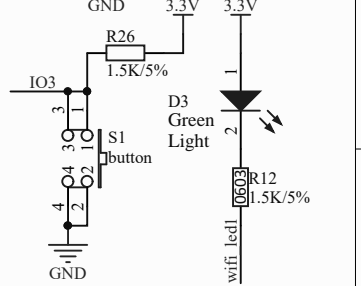
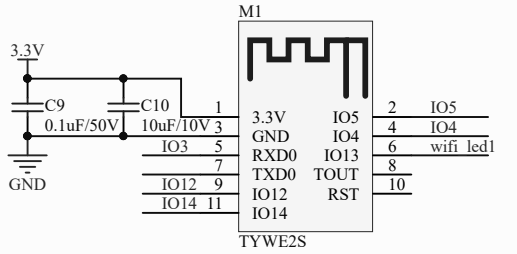
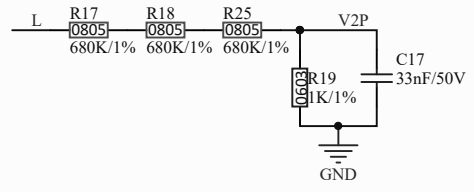
Socket Input



Socket Output



Note: The symmetrical circuit composed of R15, R16, C15, C16 have great influence on current sampling. Please organize wires at the same length and close to the chip according to the recommended accuracy.



Title: Energy Monitoring Socket with the Neutral Wire as the Ground Reference_E2S.SchDoc		Hangzhou Tuya Information Technology Co., Ltd.	
Size: A4	Engineer: hzp	Revision: V1.0.8	
Date:	Time:	Sheet 1 of 1	