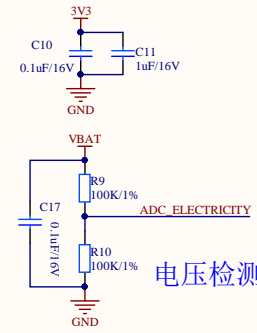
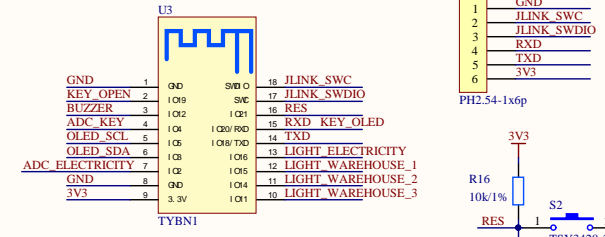


充电部分

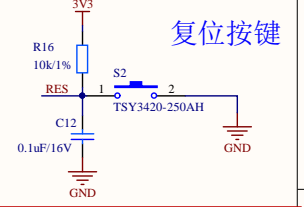
注：充电电流设置为0.5A



电压检测

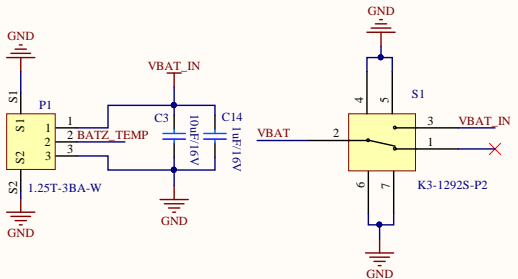


TYBN1模组



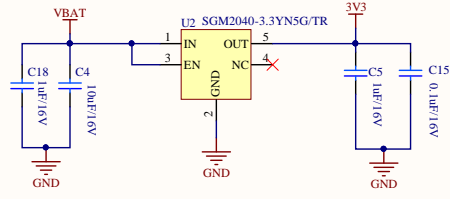
复位按键

调试接口



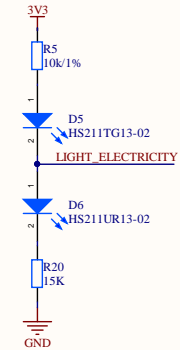
锂电池接口

电源开关



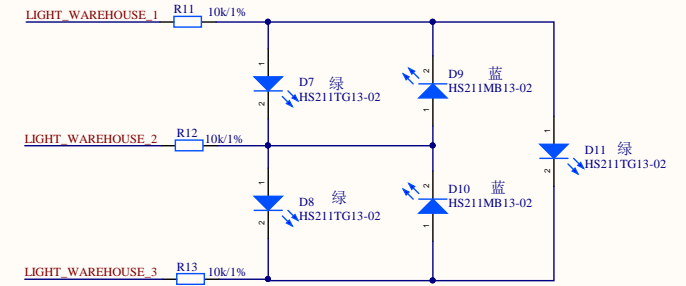
LDO

电量指示灯



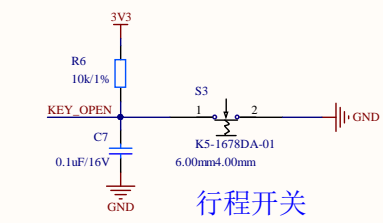
注：LIGHT_ELECTRICITY 高时，红灯D6亮，LIGHT_ELECTRICITY 低时，绿灯D5亮

药盒仓位指示灯

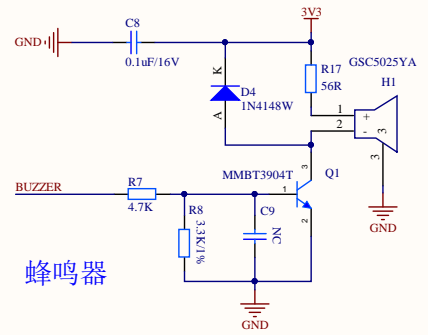


注：配网时D7指示灯快闪；10口配置与灯的亮灭情况如下表
仓位有两种模式：3个小仓位指示灯为绿色；2个大仓位指示灯为蓝色

GPIO1	GPIO2	GPIO3	D7绿	D8绿	D9蓝	D10蓝	D11绿
1	0	X	亮	灭	亮	灭	亮
0	1	X	灭	亮	灭	亮	灭
X	0	1	灭	灭	亮	亮	灭
X	1	0	亮	亮	灭	灭	亮
1	X	0	灭	灭	灭	灭	亮

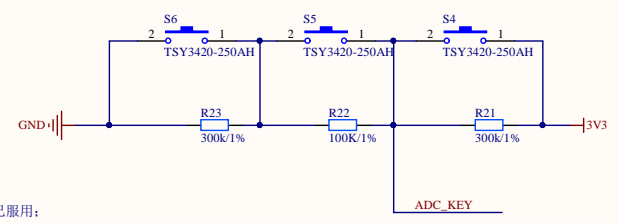


行程开关

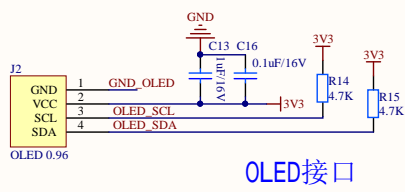


蜂鸣器

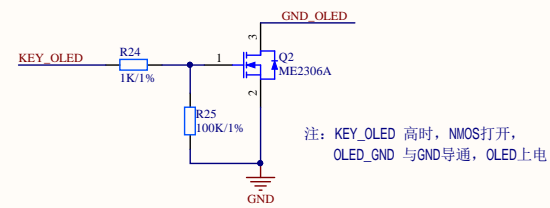
仓位按键



注：S4为复位按键，长按配网；
按下S4按键，表示，小仓1/大仓1 中药品已服用；
按下S5按键，表示，小仓2 中药品已服用；
按下S6按键，表示，小仓3/大仓2 中药品已服用；



OLED接口



注：KEY_OLED 高时，NMOS打开，OLED_GND 与GND导通，OLED上电

Title		
Size	Number	Revision
A3		
Date:	2021/11/8	Sheet of
File:	D:\work_Smart_medicine_box\SchDoc	Drawn By: