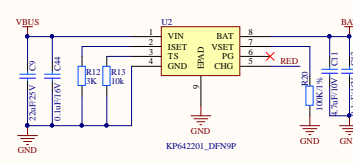


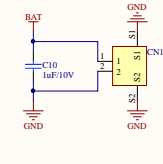
Type-C interface



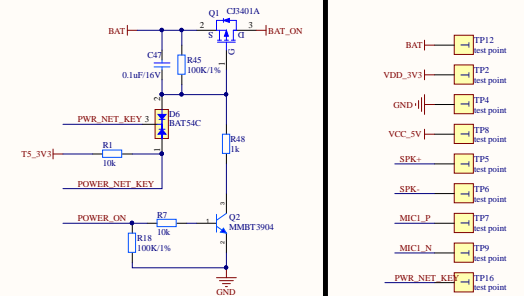
Charging circuit: 0.5A

Battery Charging Settings

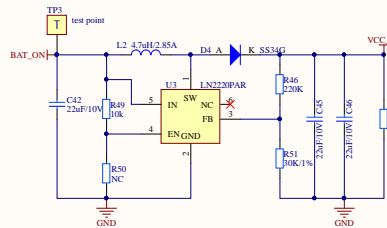
VBAT_REG	Rset < 19K	4.35V
	19K < Rset < 30K	4.4V
	30K < Rset < 40K	4.1V
	40K < Rset < 50K	4.05V
	50K < Rset < 60K	3.7V
	60K < Rset < 70K	3.6V
	70K < Rset < 80K	3.5V
	80K < Rset or float	4.2V



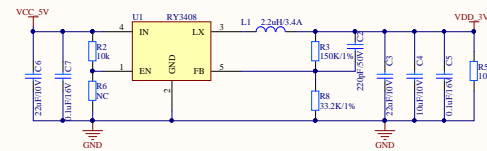
3.7V Li-Battery



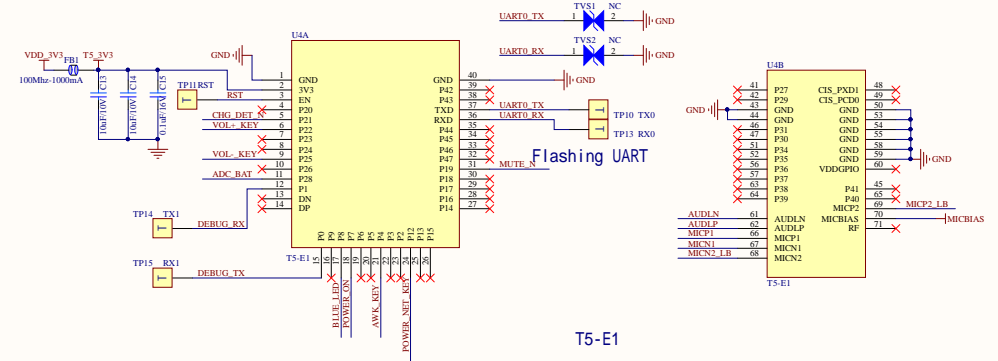
Switch power control



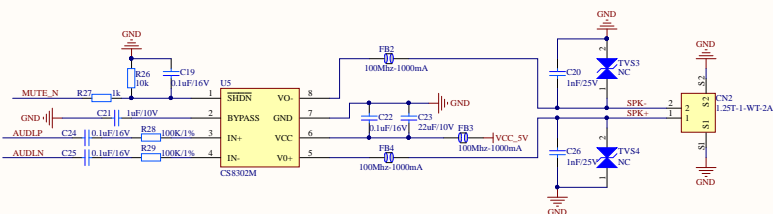
Boost circuit: 5V/1A



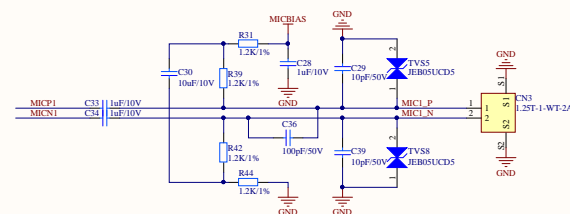
Buck circuit : 3.3V/1A



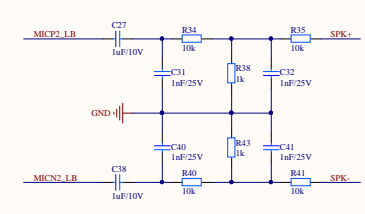
T5-E1



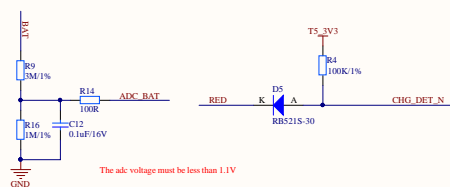
Speaker



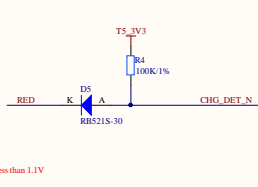
Mic



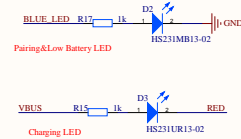
Loopback



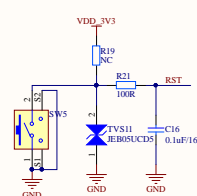
Li-Battery ADC



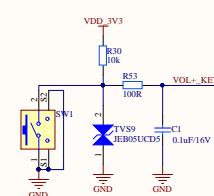
Charging detection circuit



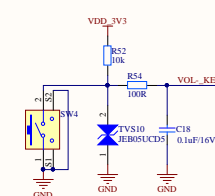
LED



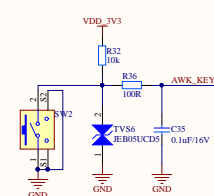
Force shutdown button



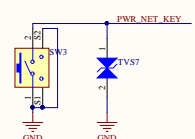
Volume +



Volume -



Wake-up button



Pairing button