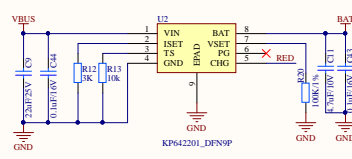


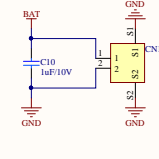
TYPE-C电源输入



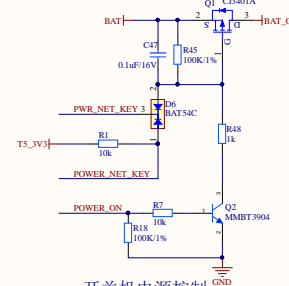
电池充电/0.5A

电池充满设置表

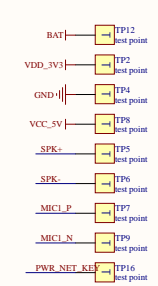
VBAT_REG	Res	V
	Res < 19K	4.35V
	19K < Res < 30K	4.4V
	30K < Res < 40K	4.1V
	40K < Res < 50K	4.05V
	50K < Res < 60K	3.7V
	60K < Res < 70K	3.6V
	70K < Res < 80K	3.5V
	80K < Res 或 悬空	4.2V



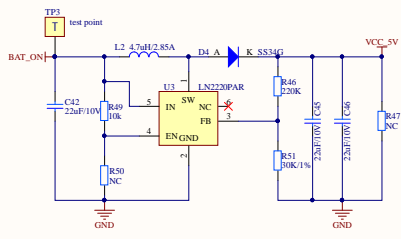
3.7V锂电池



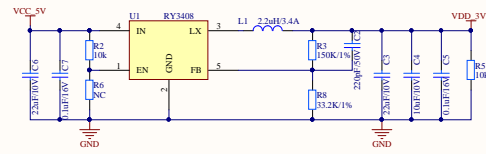
开关电源控制



TP12 test point
TP2 test point
TP4 test point
TP8 test point
TP5 test point
TP6 test point
TP7 test point
TP9 test point
TP16 test point



5V/1A



3.3V/1A

