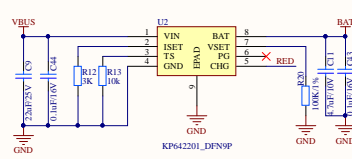


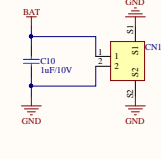
Type-C Interface



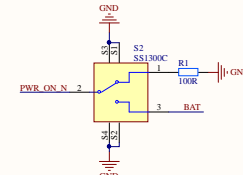
Charging circuit: 0.5A

Battery Charging Settings

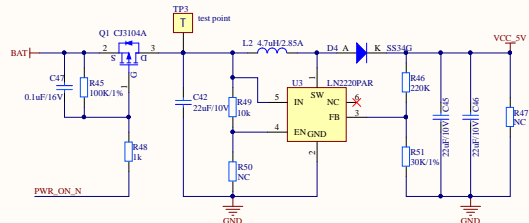
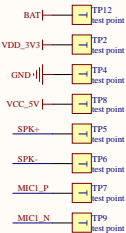
| | | |
|----------|---------------------|-------|
| VBAT_REG | Rest < 19K | 4.35V |
| | 19K < Rest < 30K | 4.4V |
| | 30K < Rest < 40K | 4.1V |
| | 40K < Rest < 50K | 4.05V |
| | 50K < Rest < 60K | 3.7V |
| | 60K < Rest < 70K | 3.6V |
| | 70K < Rest < 80K | 3.5V |
| | 80K < Rest or float | 4.2V |



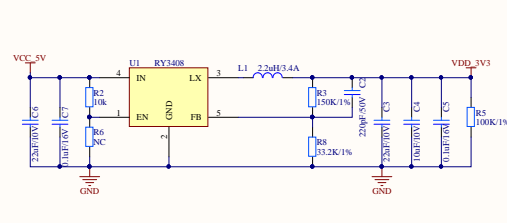
3.7V Li-Battery



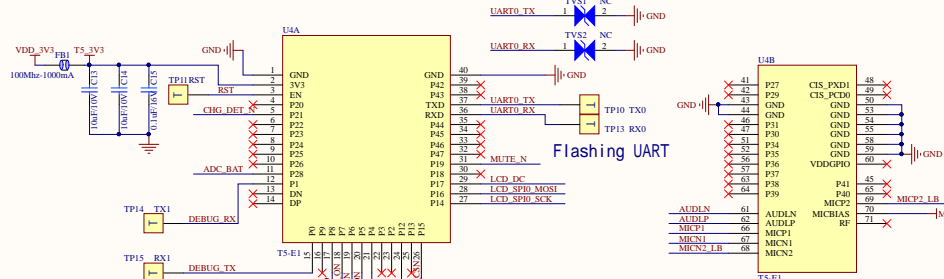
POWER ON/OFF



BOOST circuit: 5V/1A

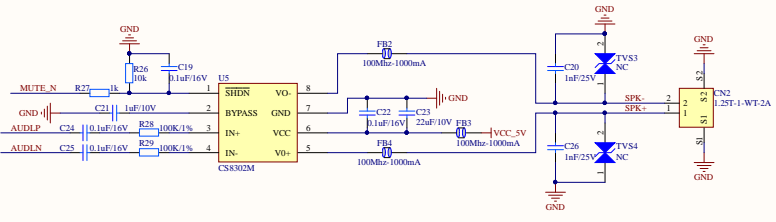


BUCK circuit : 3.3V/1A

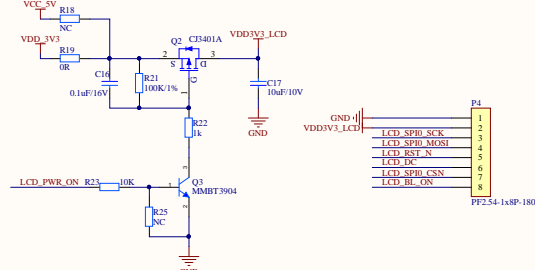


Flashing UART

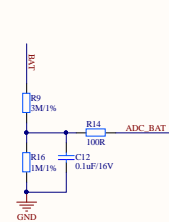
T5-E1



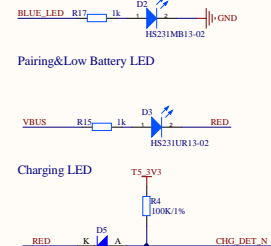
SPEAKER



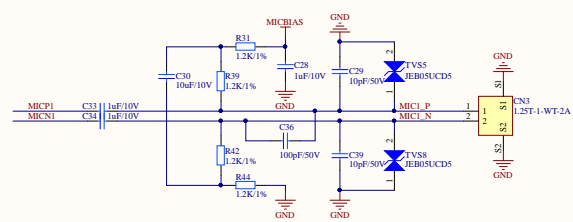
LCD



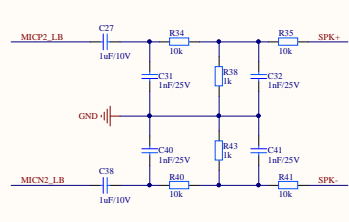
Li-Battery ADC



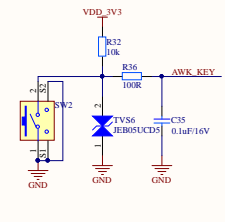
LED



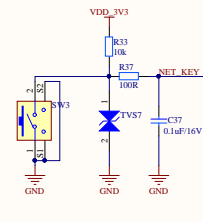
MIC



LOOPBACK



Wake-up Button



Pairing Button